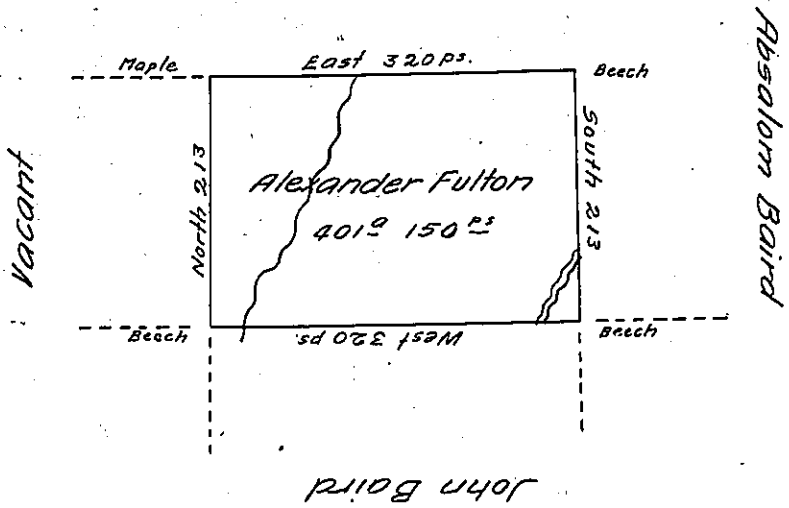


Near the Destrict line



Situate on the West side of French Creek in Allegheny  
 County containing 401 Acres 150 perches and allowance of six percent  
 for Roads &c. Surveyed the 2<sup>nd</sup> day of March 1800 in pursuance  
 of a Warrant granted to Alexander Fulton dated the 4<sup>th</sup> day of  
 January 1794.

John Power D.Y. Sr.

To Daniel Brodhead Esquire  
 Surveyor General

IN TESTIMONY that the above is a copy of the original remaining on file in  
 the Department of Internal Affairs of Pennsylvania, made  
 conformably to an Act of Assembly approved the 16th day of  
 February, 1833, I have hereunto set my Hand and caused  
 the Seal of said Department to be affixed at Harrisburg,  
 this second day of February 1905

*Isaac D. Brown*  
 Secretary of Internal Affairs.